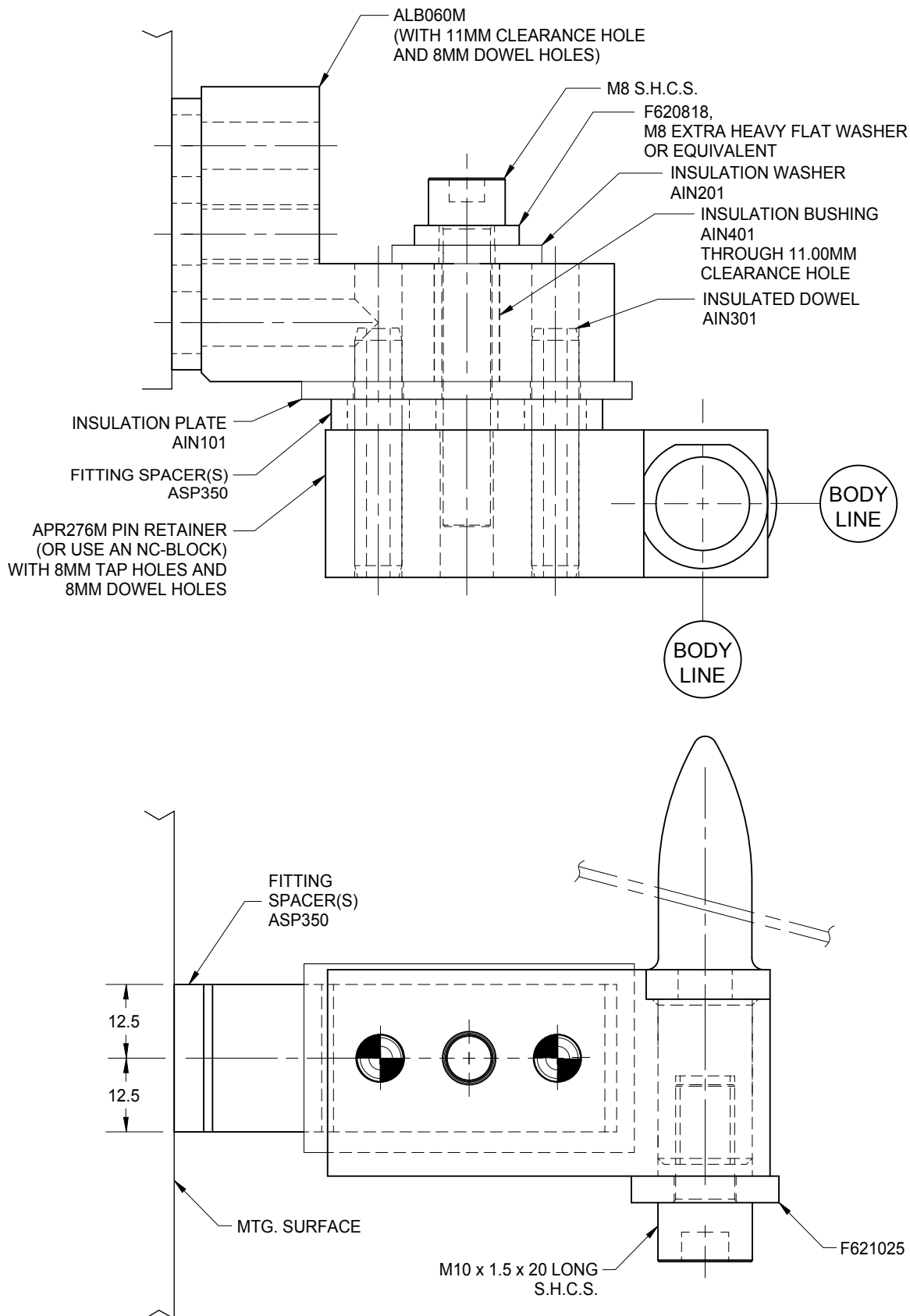


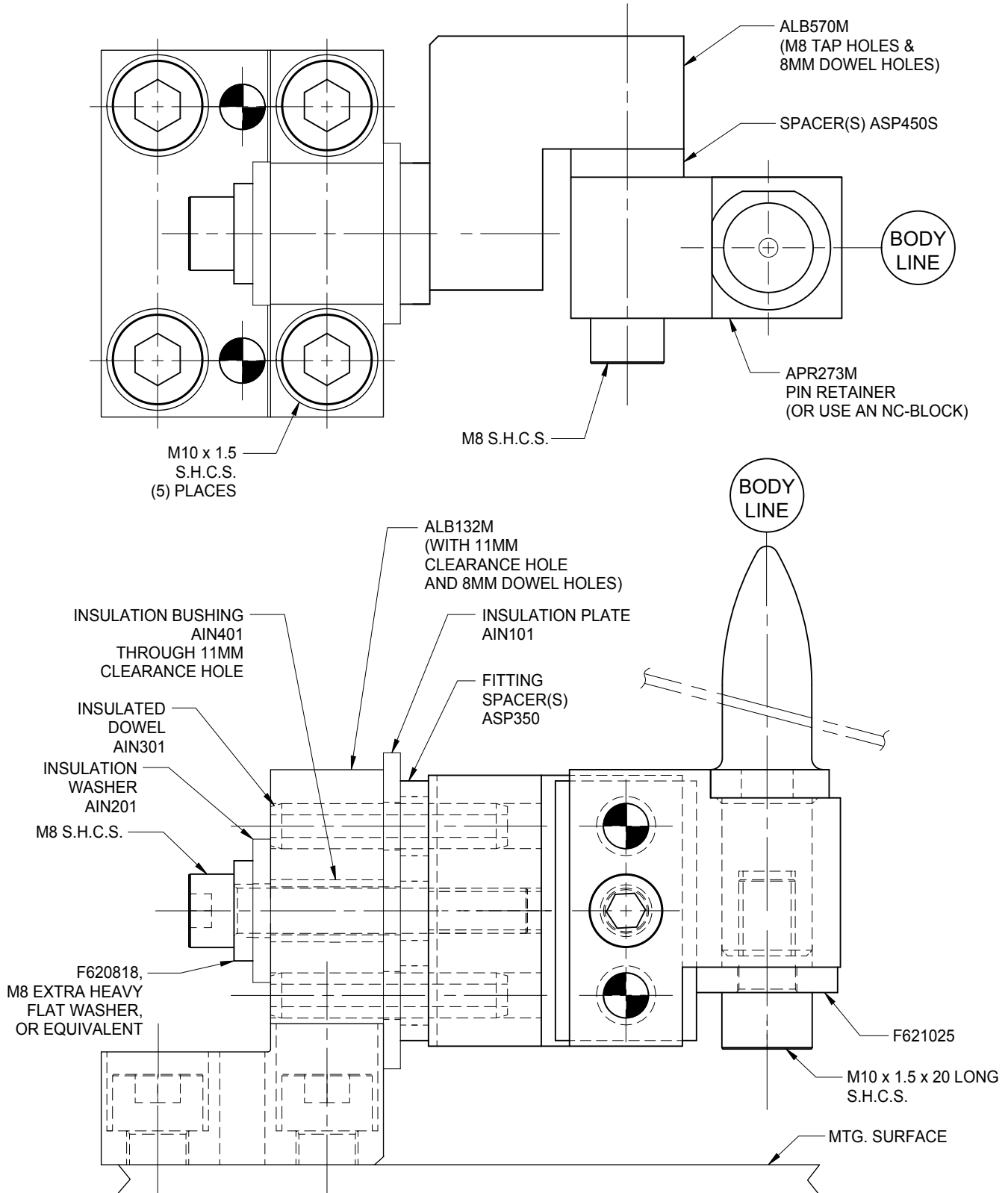
INSULATION INDEX

PAGE	DATE	NAAMS CODE	DESCRIPTION
BB-1	12/02/19		Typical Insulation Method Index
BB-2	12/02/19		Typical Insulation Method - Example 1
BB-3	12/02/19		Typical Insulation Method - Example 2
BB-4	12/02/19	AIN101	Insulation Plate 3-Holes
BB-5	12/02/19	AIN102	Insulation Plate 4-Holes
BB-6	12/02/19	AIN103	Insulation Plate 6-Holes
BB-7	12/02/19	AIN201	Insulation Washer
BB-8	12/02/19	AIN301	Insulation Dowel
BB-9	12/02/19	AIN401	Insulation Bushing

TYPICAL INSULATION METHOD - EXAMPLE 1



TYPICAL INSULATION METHOD - EXAMPLE 2

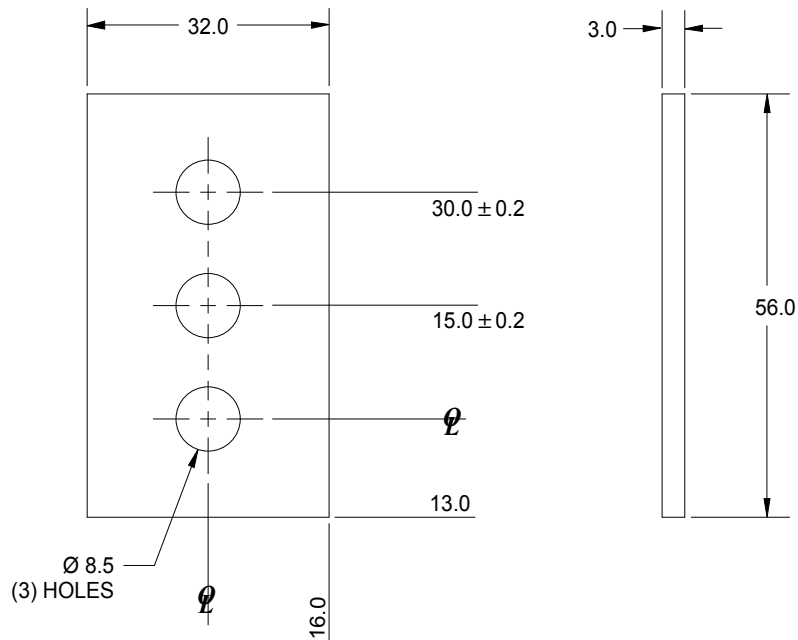


INSULATION PLATE 3-HOLES

Tolerances:

- 1 PLACE MACHINING ± 0.3
- 1 PLACE FABRICATION ± 1.5
- 2 PLACE ± 0.08 BETWEEN MACHINED SURFACES
- ± 0.03 BETWEEN SINGLE DOWEL AND A HEEL SURFACE
- ± 0.03 BETWEEN DOWELS IN THE SAME PLANE
- ± 0.10 BETWEEN DOWELS IN DIFFERENT PLANES
- ± 0.13 TO SCREW HOLES, NON ACCUMULATIVE

NOTES: ALL DIMENSIONS METRIC UNLESS OTHERWISE NOTED.



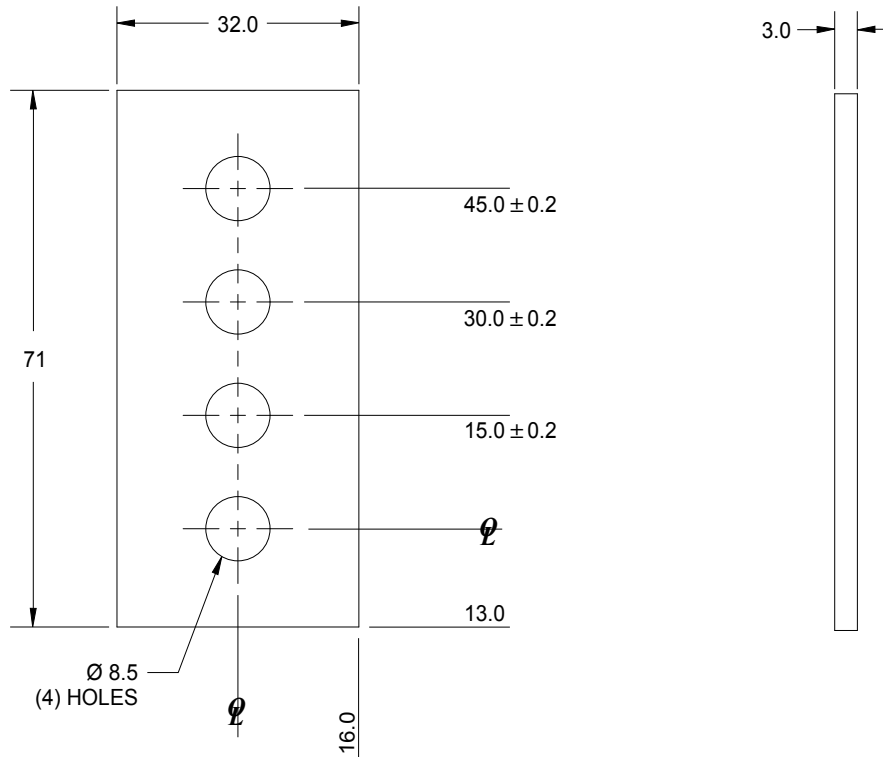
NAAMS CODE	MATERIAL	WT. kg.
AIN101	LE PHENOLIC LAMINATE	0.007

INSULATION PLATE 4-HOLES

Tolerances:

- 1 PLACE MACHINING ± 0.3
- 1 PLACE FABRICATION ± 1.5
- 2 PLACE ± 0.08 BETWEEN MACHINED SURFACES
- ± 0.03 BETWEEN SINGLE DOWEL AND A HEEL SURFACE
- ± 0.03 BETWEEN DOWELS IN THE SAME PLANE
- ± 0.10 BETWEEN DOWELS IN DIFFERENT PLANES
- ± 0.13 TO SCREW HOLES, NON ACCUMULATIVE

NOTES: ALL DIMENSIONS METRIC UNLESS OTHERWISE NOTED.



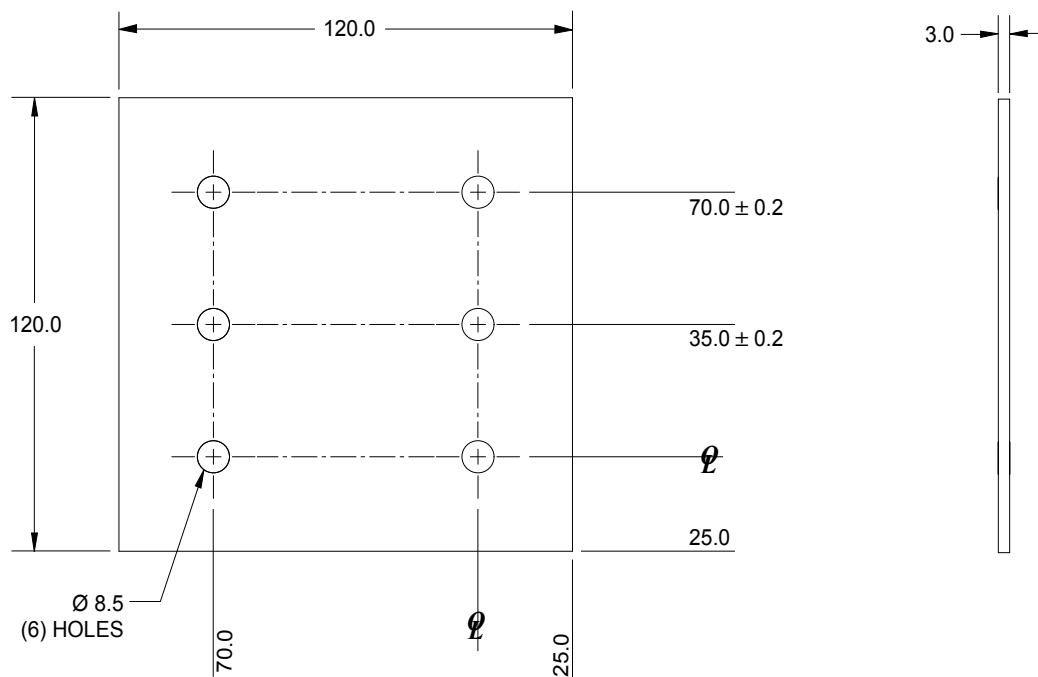
NAAMS CODE	MATERIAL	WT. kg.
AIN102	LE PHENOLIC LAMINATE	0.008

INSULATION PLATE 6-HOLES

Tolerances:

- 1 PLACE MACHINING ± 0.3
- 1 PLACE FABRICATION ± 1.5
- 2 PLACE ± 0.08 BETWEEN MACHINED SURFACES
- ± 0.03 BETWEEN SINGLE DOWEL AND A HEEL SURFACE
- ± 0.03 BETWEEN DOWELS IN THE SAME PLANE
- ± 0.10 BETWEEN DOWELS IN DIFFERENT PLANES
- ± 0.13 TO SCREW HOLES, NON ACCUMULATIVE

NOTES: ALL DIMENSIONS METRIC UNLESS OTHERWISE NOTED.



NAAMS CODE	MATERIAL	WT. kg.
AIN103	LE PHENOLIC LAMINATE	0.058

INSULATION WASHER

GLOBAL STANDARD COMPONENTS



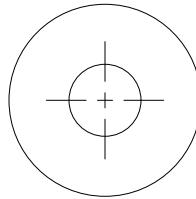
Assembly

12/02/19

Tolerances:

- 1 PLACE MACHINING ± 0.3
- 1 PLACE FABRICATION ± 1.5
- 2 PLACE ± 0.08 BETWEEN MACHINED SURFACES
- ± 0.03 BETWEEN SINGLE DOWEL AND A HEEL SURFACE
- ± 0.03 BETWEEN DOWELS IN THE SAME PLANE
- ± 0.10 BETWEEN DOWELS IN DIFFERENT PLANES
- ± 0.13 TO SCREW HOLES, NON ACCUMULATIVE

NOTES: ALL DIMENSIONS METRIC UNLESS OTHERWISE NOTED.



NAAMS CODE	SCREW SIZE	I.D.	O.D.	THICKNESS
AIN201	M8	9.5 (.375 INCH)	25.0 TO 25.4 (1.0 INCH)	3.0 TO 3.2 (.125 INCH)

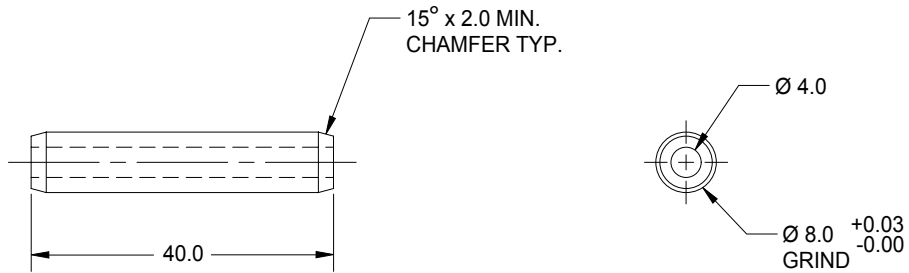
MATERIAL: PHENOLIC LAMINATE GRADE G-10

INSULATION DOWEL

Tolerances:

- 1 PLACE MACHINING ± 0.3
- 1 PLACE FABRICATION ± 1.5
- 2 PLACE ± 0.08 BETWEEN MACHINED SURFACES
- ± 0.03 BETWEEN SINGLE DOWEL AND A HEEL SURFACE
- ± 0.03 BETWEEN DOWELS IN THE SAME PLANE
- ± 0.10 BETWEEN DOWELS IN DIFFERENT PLANES
- ± 0.13 TO SCREW HOLES, NON ACCUMULATIVE

NOTES: ALL DIMENSIONS METRIC UNLESS OTHERWISE NOTED.



NAAMS CODE
AIN301

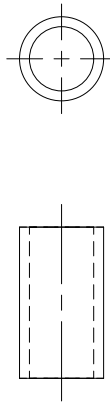
MATERIAL: CORE - 304 STAINLESS STEEL
OUTSIDE - PHENOLIC

INSULATION BUSHING

Tolerances:

- 1 PLACE MACHINING ± 0.3
- 1 PLACE FABRICATION ± 1.5
- 2 PLACE ± 0.08 BETWEEN MACHINED SURFACES
- ± 0.03 BETWEEN SINGLE DOWEL AND A HEEL SURFACE
- ± 0.03 BETWEEN DOWELS IN THE SAME PLANE
- ± 0.10 BETWEEN DOWELS IN DIFFERENT PLANES
- ± 0.13 TO SCREW HOLES, NON ACCUMULATIVE

NOTES: ALL DIMENSIONS METRIC UNLESS OTHERWISE NOTED.



NAAMS CODE	SCREW SIZE	I.D.	O.D.	LENGTH	INSERTION HOLE SIZE
AIN401	M8	8.5 ± 0.04	11.125 ± 0.05	20.00	$11.00^{+0.05}_{-0.00}$

MATERIAL: NYLON 101

NOTE: LENGTH MAY BE CUT TO SUIT AT ASSEMBLY.
USE MULTIPLE BUSHINGS FOR HOLES DEEPER THAN 20MM.